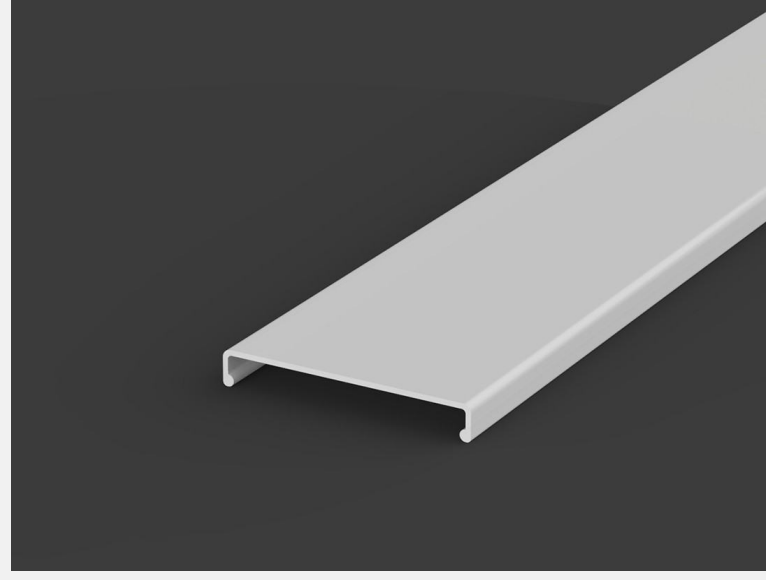
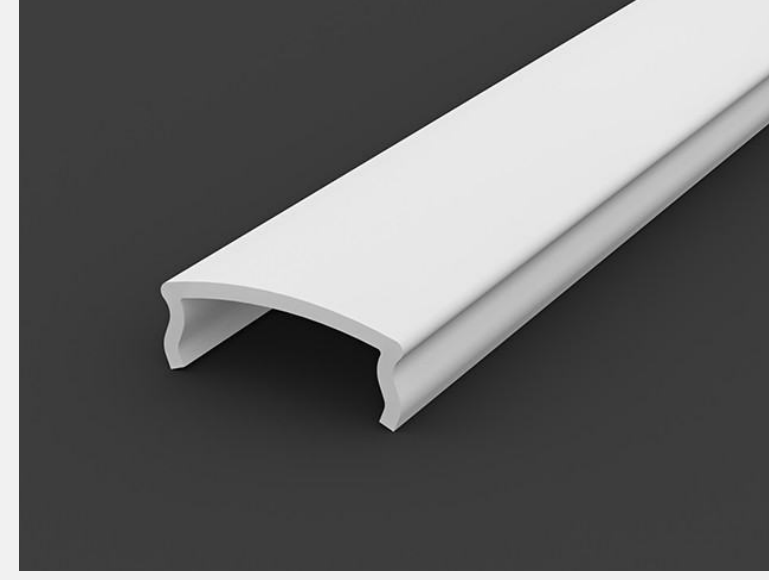


TECH Light - Diffusers

98% Transparent
 70% White
 63% Matt Opal
 38% Black Opal
 0% Mounting*



C0



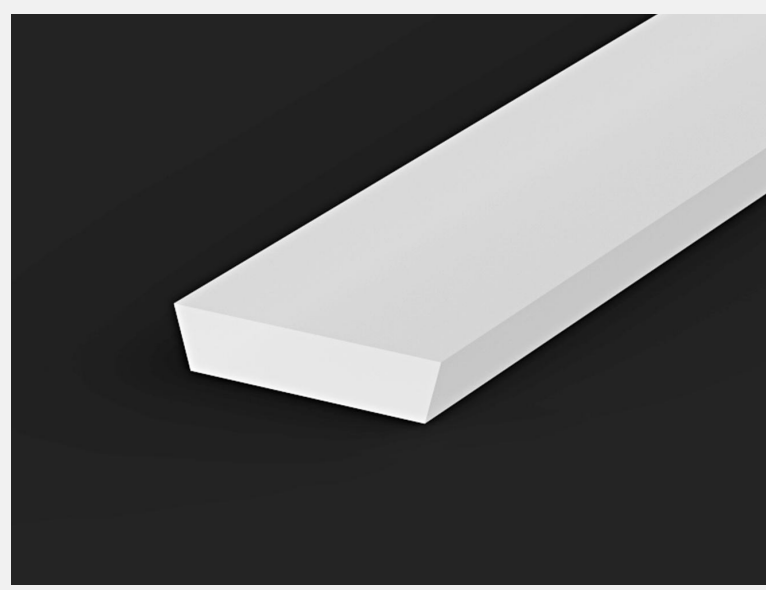
C1



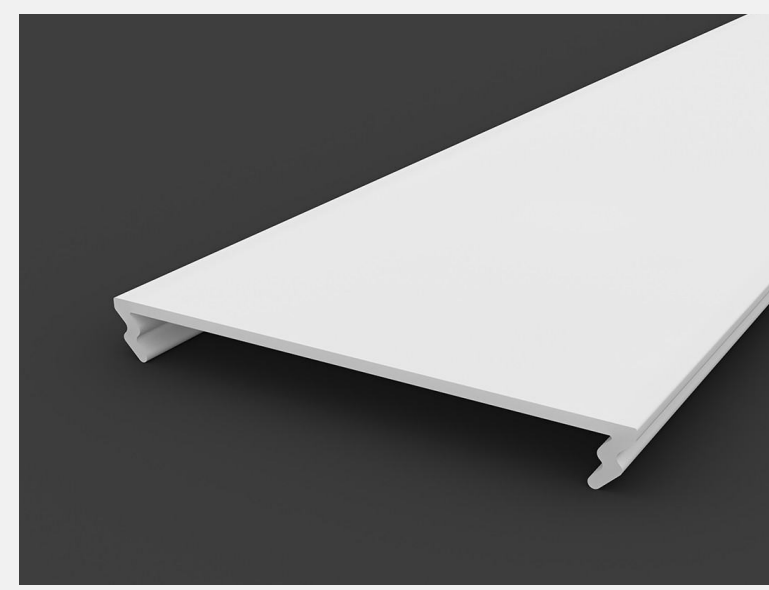
C2



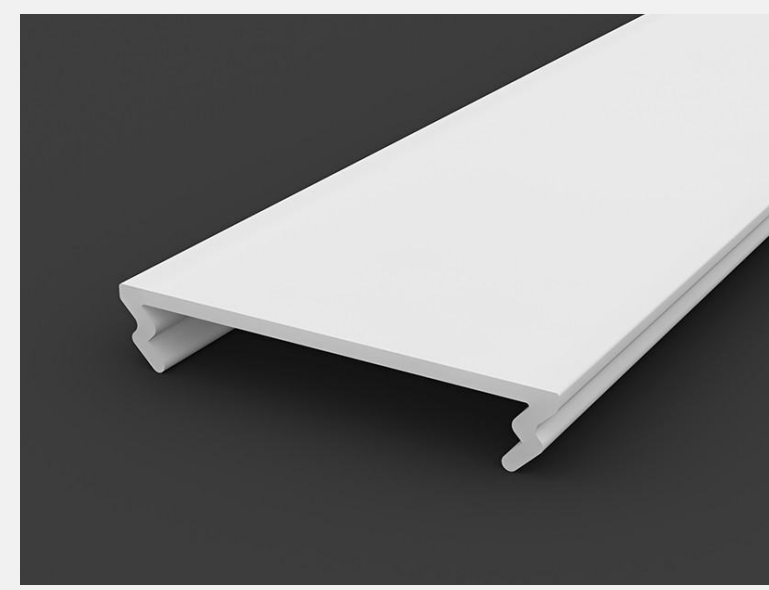
C4



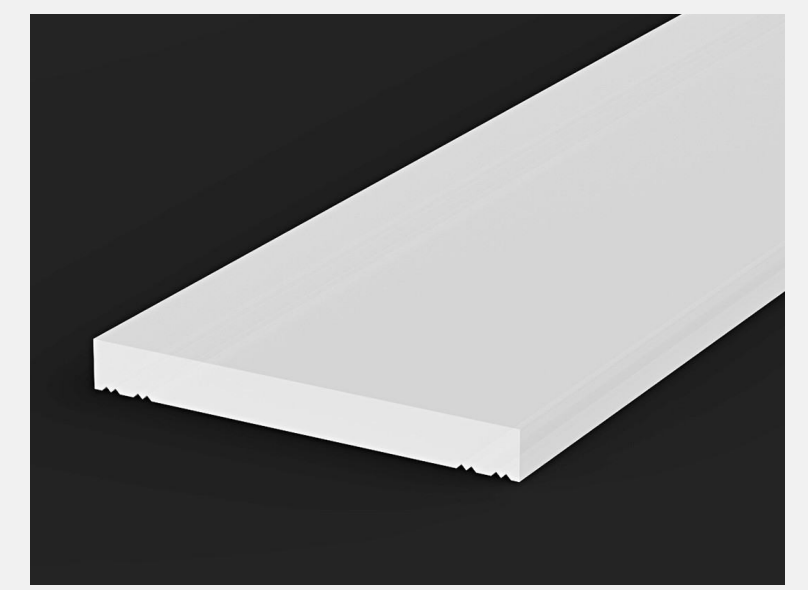
C5 **



C6



C7



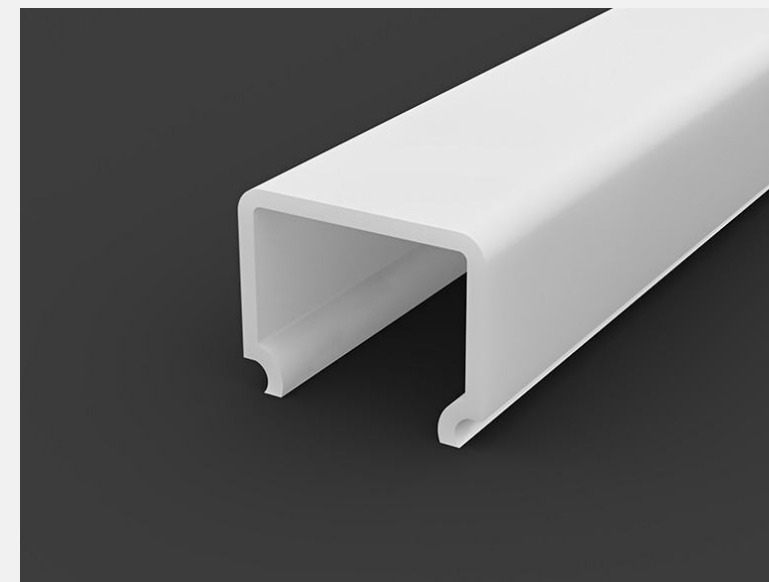
C8



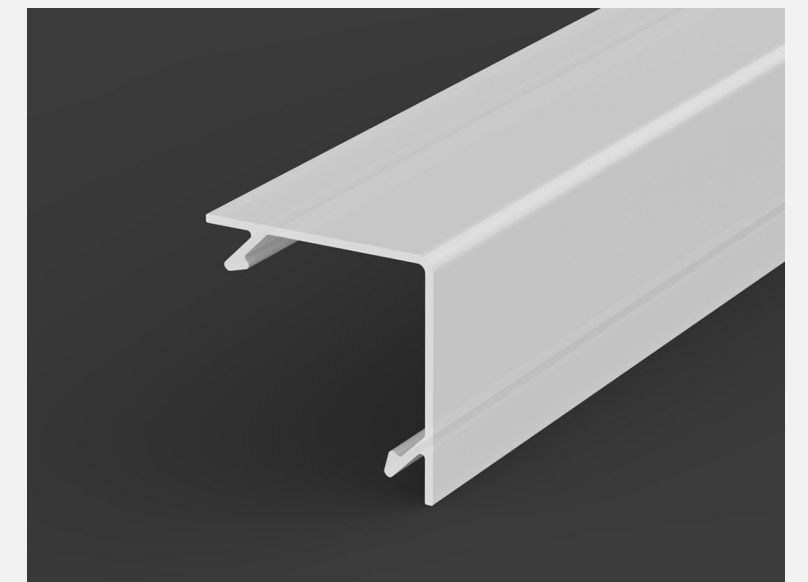
C9



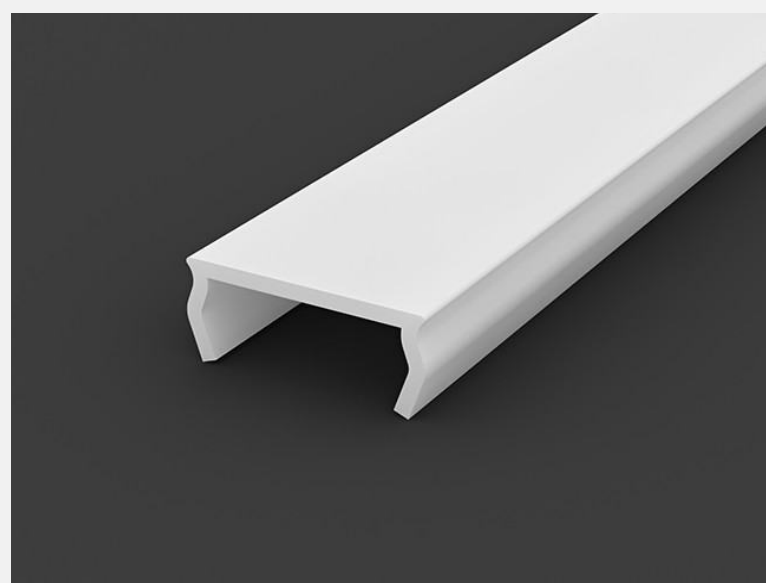
C10



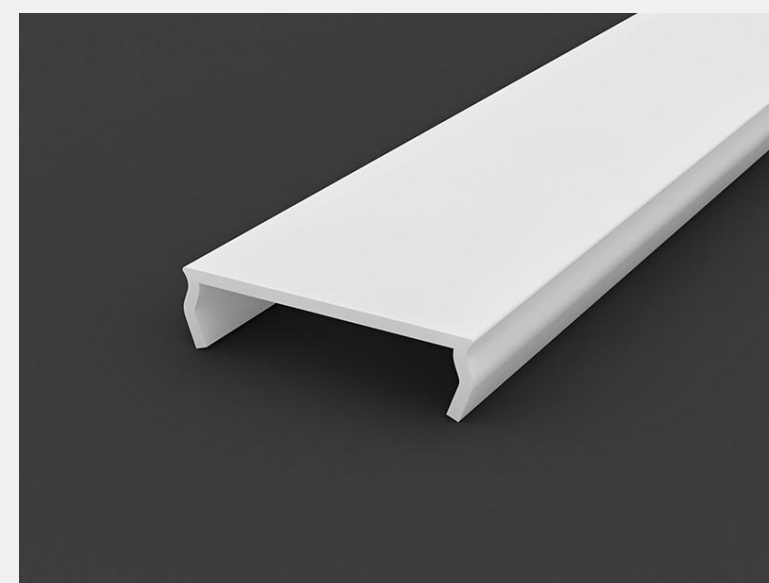
C11



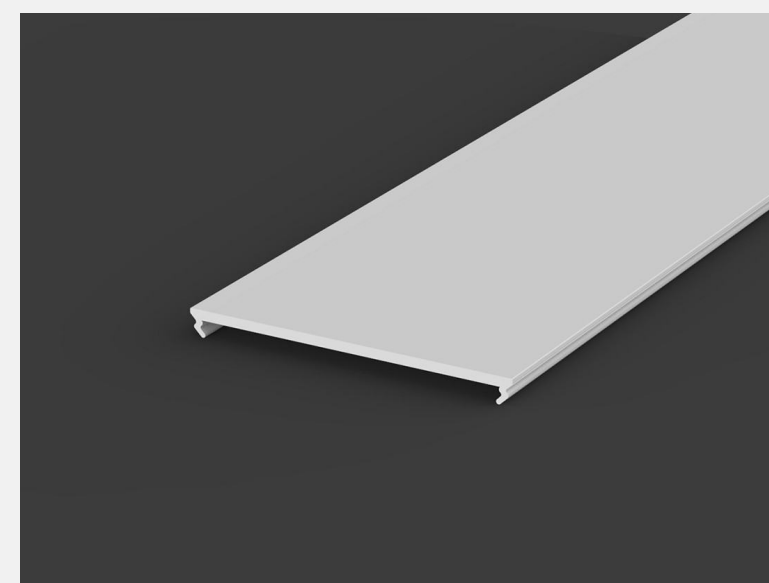
C12



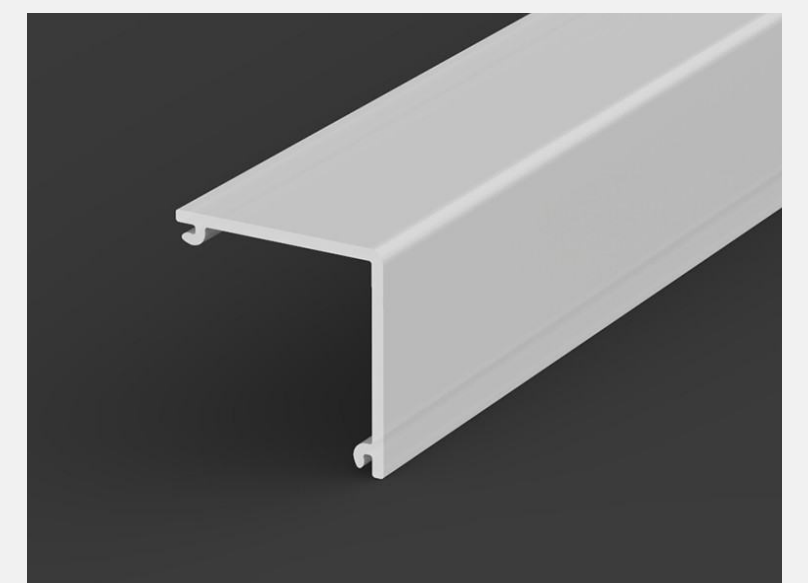
C13



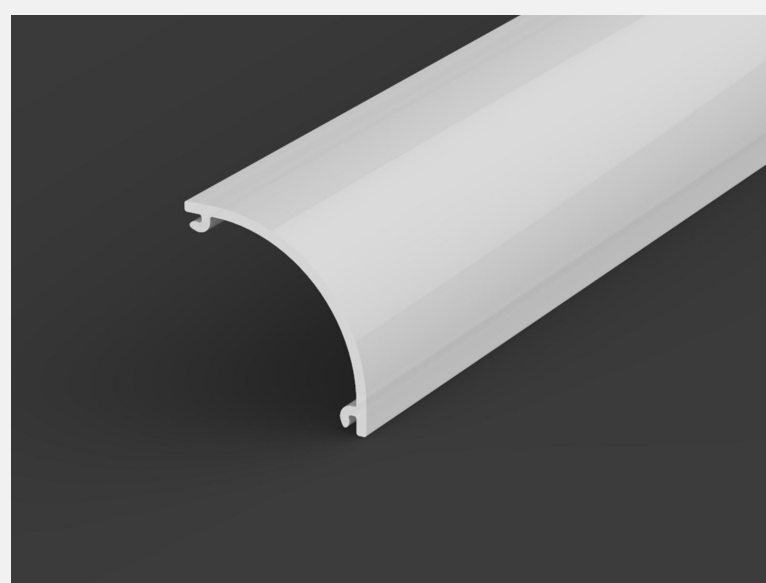
C15



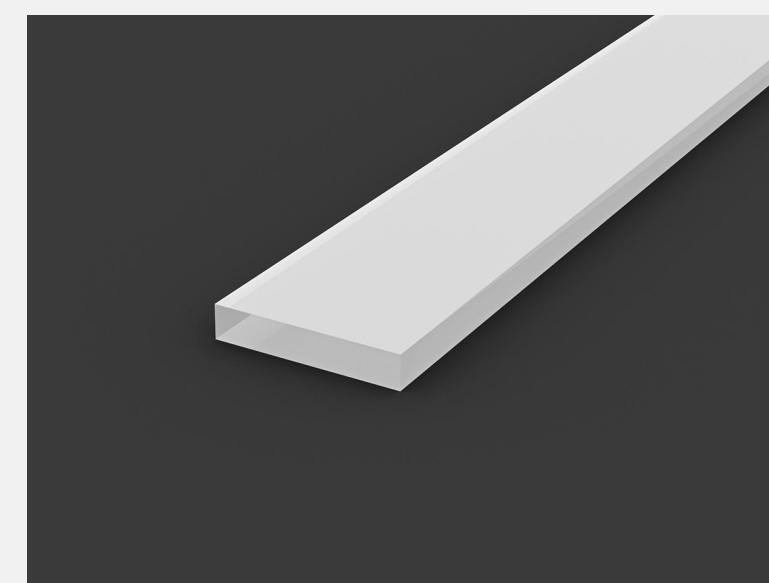
C16



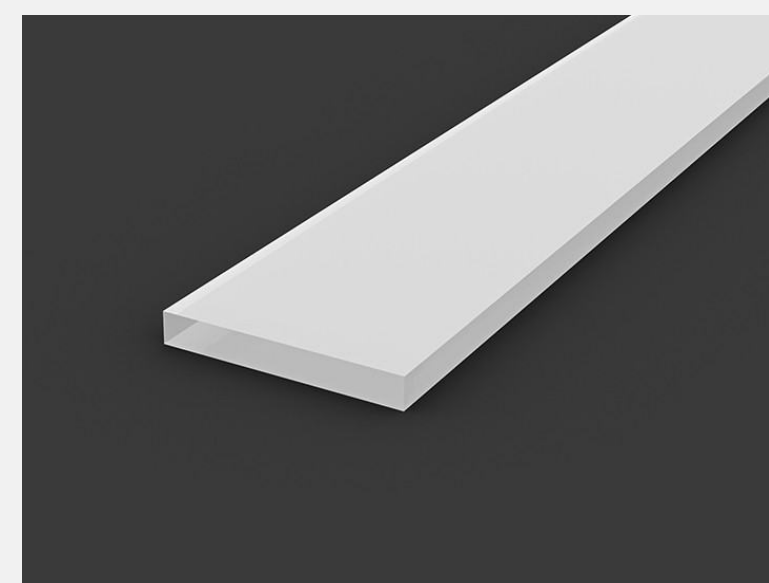
C17



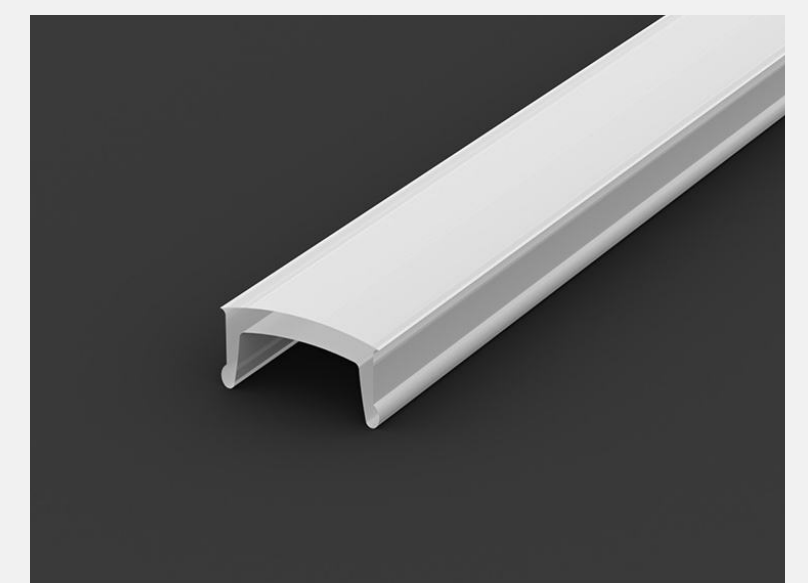
C18



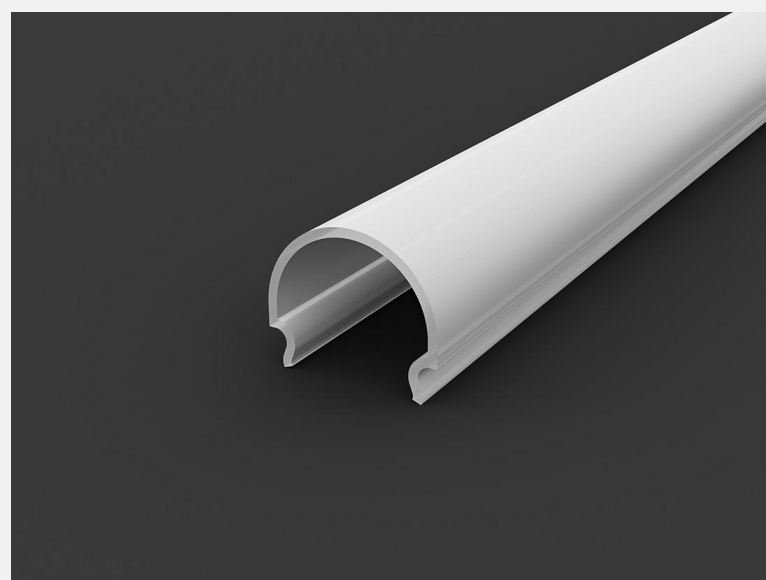
C19



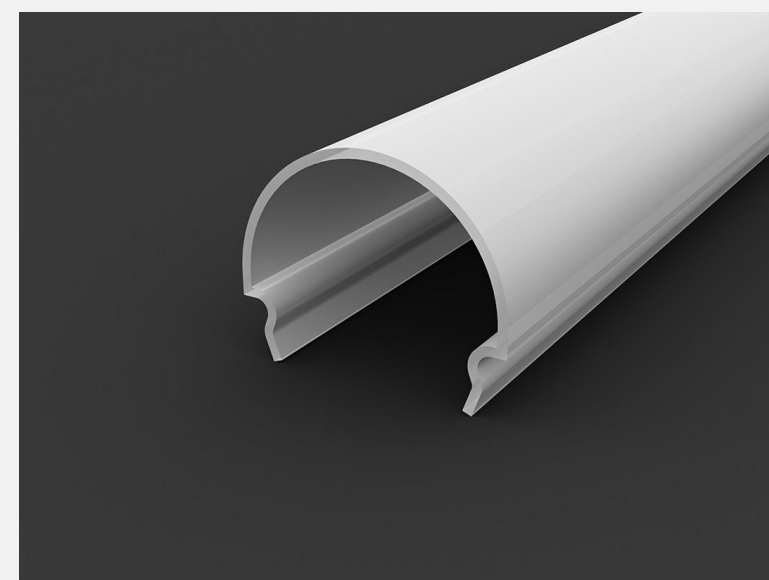
C20



C21



C22



C23

Polycarbonate (PC) shrinkage of 0.5%

*They are used for mounting concealed profiles (GK); they are inserted to protect the inside of the profile when applying the putty.

**White 67%